



# KEEPING THE SUPPLY CHAIN MOVING

SOUTHERN RAILWAY OF BRITISH COLUMBIA

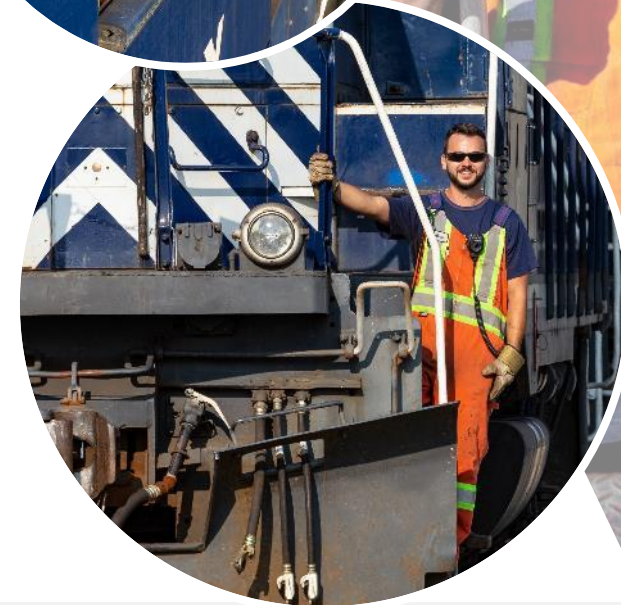
MAY 7, 2024

RAC SHORT LINE CONFERENCE



# AGENDA

- SRY origin story
- How SRY helps to keep the supply chain moving:
  1. Resiliency
  2. Relationships



The background image shows three men in safety gear standing in front of a large yellow rail maintenance machine. The man on the left wears a red hard hat and safety glasses. The man in the middle wears a grey cap and safety glasses. The man on the right has long hair and a beard. They are all wearing high-visibility orange jumpsuits with reflective yellow stripes. The machine behind them is yellow and has 'HTT' and 'MK IV' written on it. There is also a 'Harsco' logo. The text 'OVERVIEW OF SRY' is overlaid in large white letters. Below it, the word 'ORIGIN' is written in smaller white letters, preceded by a thin horizontal line.

# OVERVIEW OF SRY

ORIGIN

# URBAN ROOTS

1871

**BC JOINS CONFEDERATION**

1887

**CPR ARRIVES IN VANCOUVER**

1897

**BC ELECTRIC RAILWAY FOUNDED (BC ER)**

1910

**COMPLETION OF THE FRASER VALLEY SUBDIVISION**

Premier McBride drives the ceremonial last spike  
Chilliwack, BC

1908

**CONNECTING VANCOUVER OVER THE FRASER RIVER**

Completion of Fraser River Railway Bridge allows rail  
construction to the Fraser Valley to begin

1950s

**RISE OF THE CAR**

Decline of interurban passenger service

1961

**CROWN CORPORATION**

BC ER becomes a Crown corporation, part of  
BC Hydro. Freight only

1994

**SRV JOINS THE WASHINGTON GROUP  
OF COMPANIES**

1988

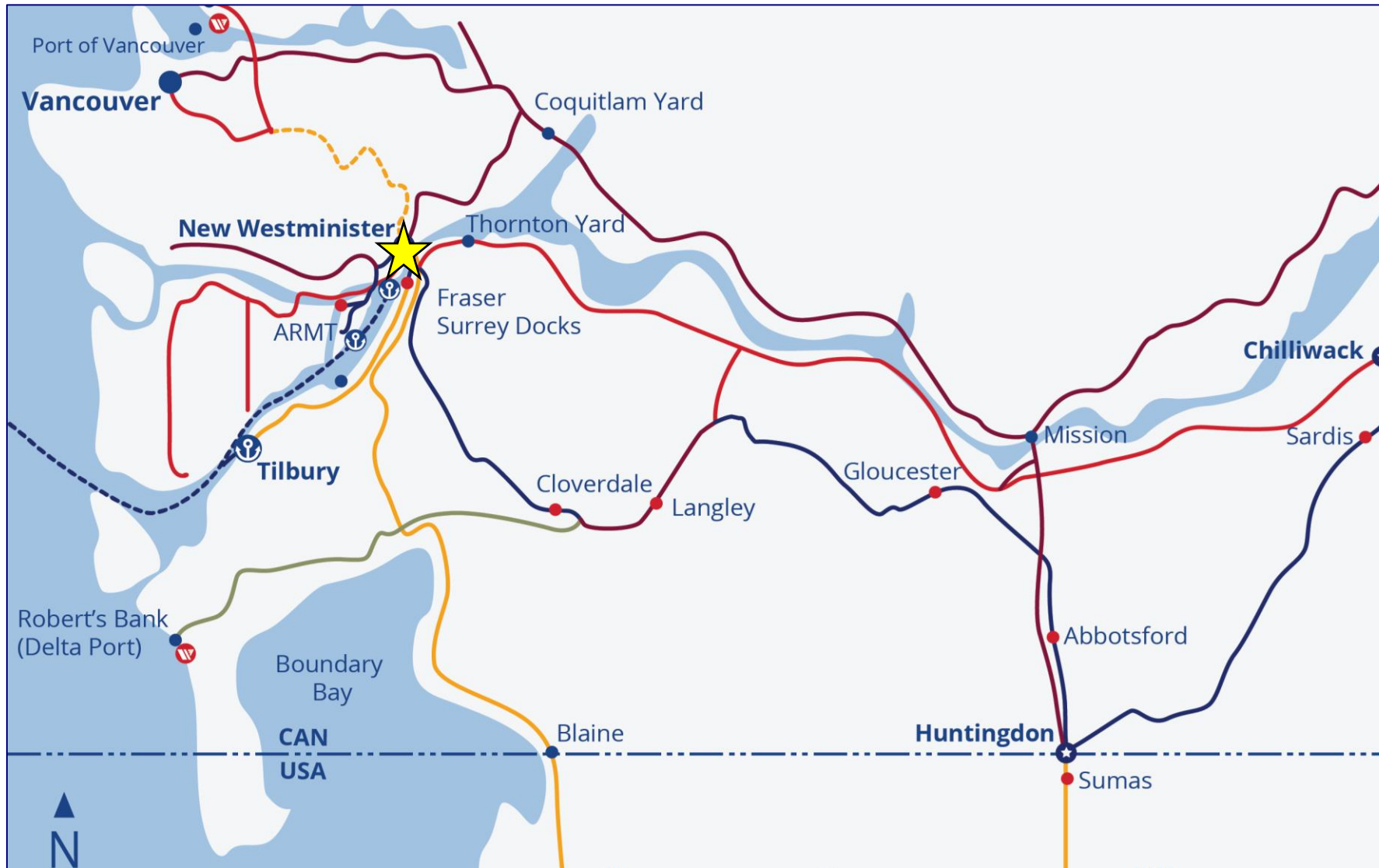
**SRV IS ESTABLISHED**

From BC Hydro Railway to Southern Railway of  
British Columbia

2021

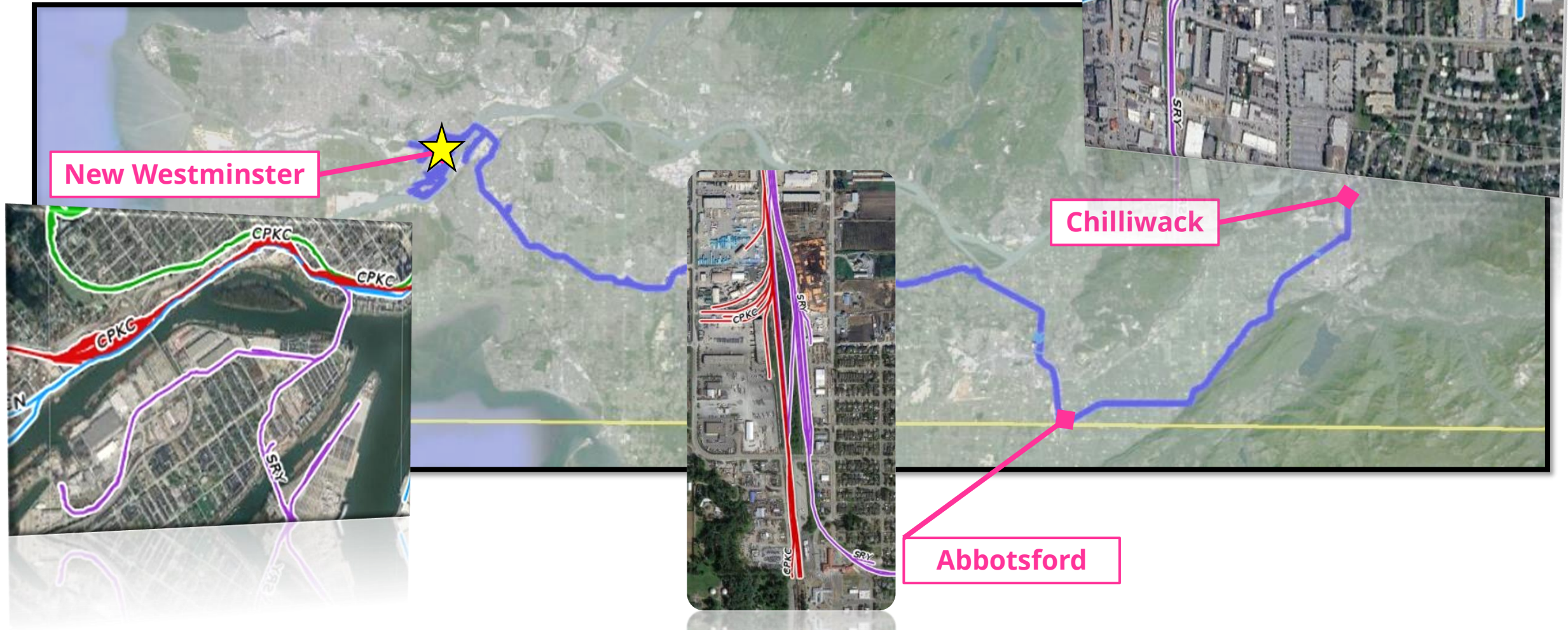
**ATMOSPHERIC RIVER**


# LOWER MAINLAND RAIL NETWORK



# INTERCHANGE

CPKC, CN, BNSF, UP





# RESILIENCY

---

/ri-zil-yen(t)-see

---

READILY RECOVERING AND ADAPTING  
TO ADVERSITY

# RESILIENCY

## KEEPING CLASS 1s MOVING

- Keep Class 1 networks fluid
- Enable Class 1s to focus on their strength in line-haul service
- Short lines: 80% of the effort to serve 20% of the supply chain
- Leverage SRY infrastructure and capacity to buffer shocks and surges in the supply chain
- 2021 atmospheric river impacts





# RELATIONSHIPS

/ri-ley-shuhn-ships

THE LINKS THAT BIND

# RELATIONSHIPS

## KEEPING CUSTOMERS MOVING

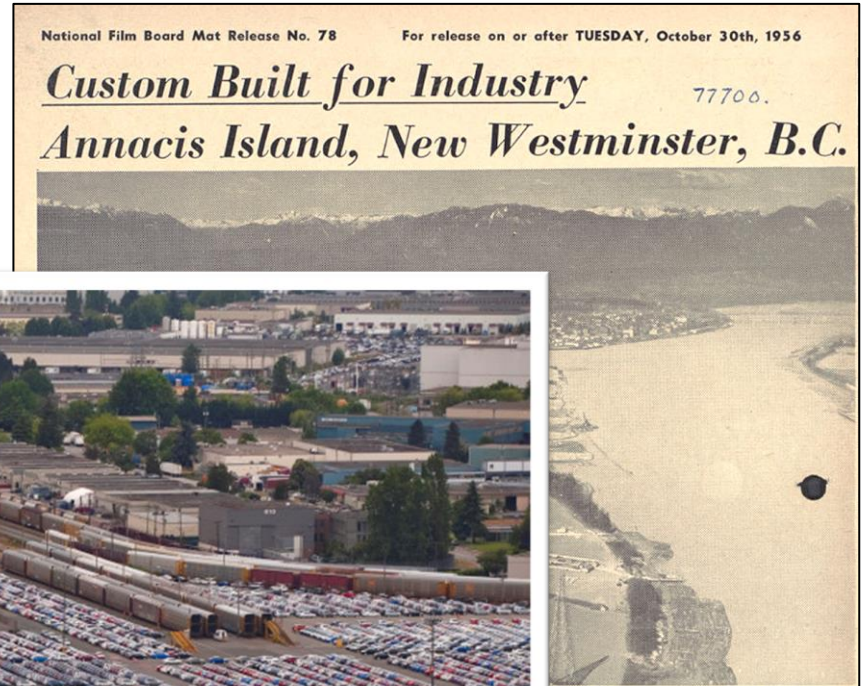
- Particularly in a congested urban city and port city like Vancouver, every industry that uses rail is a benefit to the economy, environment, community
- SRY customer needs can range from 2-3 railcars per week to 140+ railcars per day
- Foster close relationships with customers, establishing trust and accountability
- SRY is the proverbial “link” in the supply chain between customers and Class 1s
- See each link in the supply chain as moving in a cycle: SRY helps customers cycle railcars through their terminals, then we cycle railcars back to interchange and support Class 1s to be fluid across the continent



# ANNACIS ISLAND

## INDUSTRIAL HUB

- First industrial hub in Canada established in 1955. 1,200 acres island
- BC Electric Railway (now SRY) secured exclusive rail access
- 2021 – SRY Annacis Island Track Capacity Improvement Project
- \$7.2 Million capital investment (\$3.6 Million in NTCF funding)



# ANNACIS ISLAND

## INDUSTRIAL HUB

- Rail-served Port of Vancouver “Annacis Auto Terminal”
- Terminal receives almost 100% of import automobiles from Asia
- 480,000 new vehicles annually
- Need to optimize amid geographic constraints
- \$22 Million in NTCF funding for additional track capacity



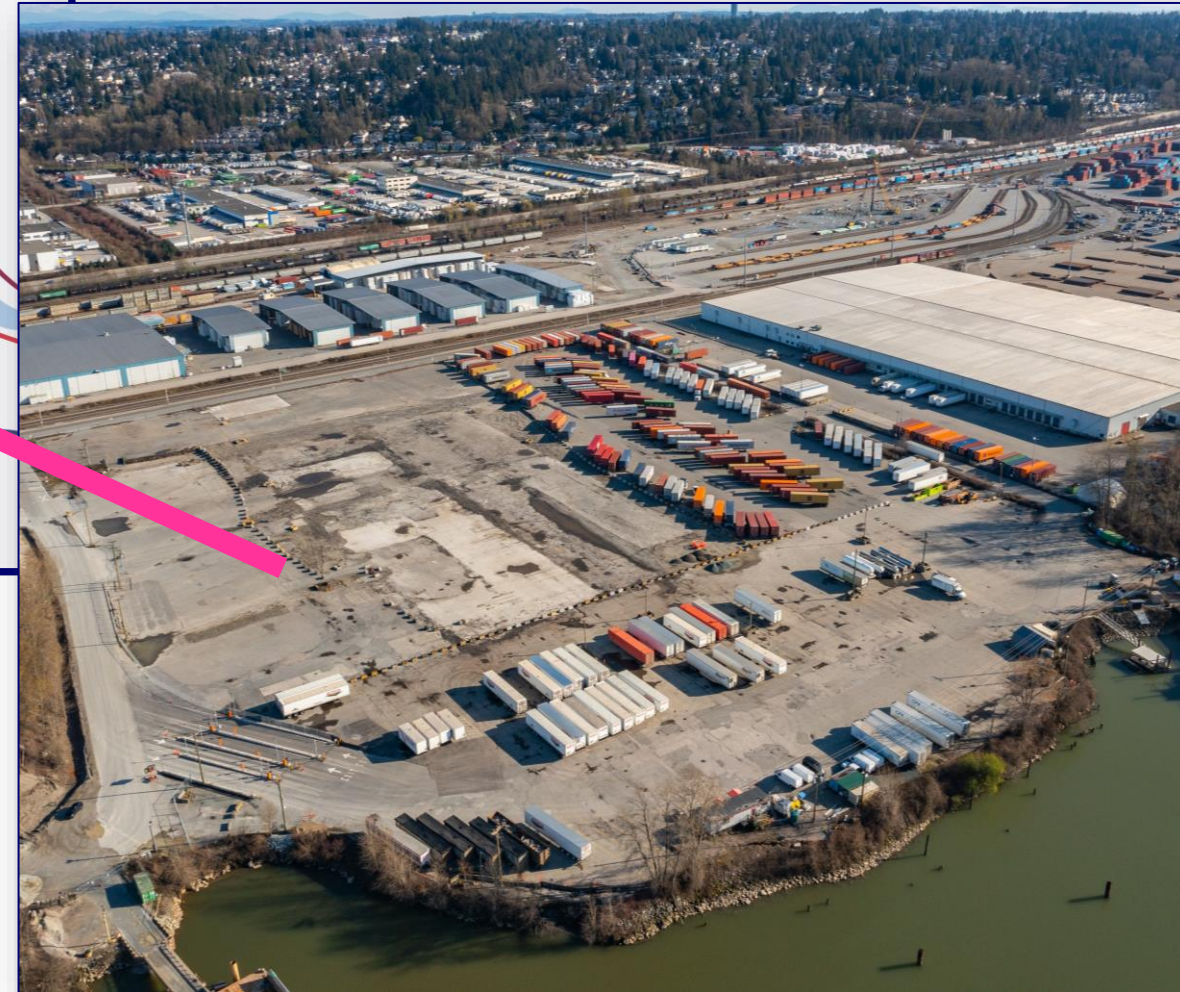
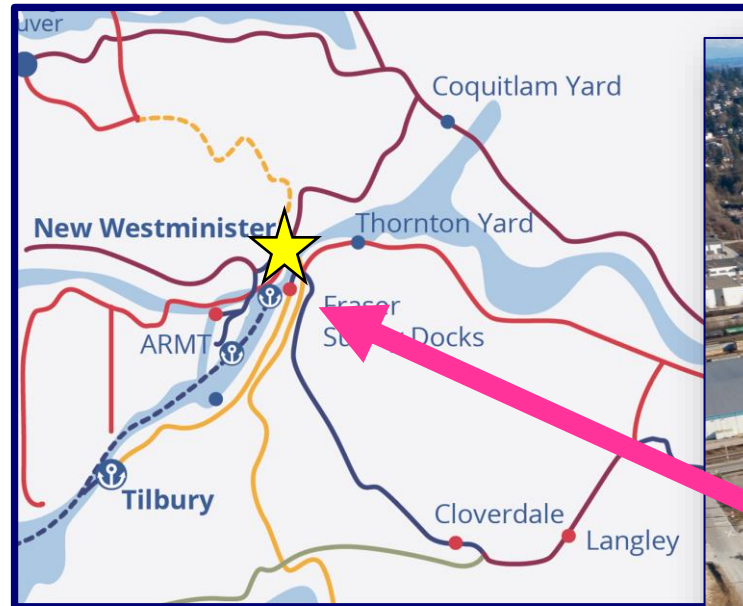


# Improving service performance on Annacis Island.

# TIMBERLAND PROPERTY

SRV IS ADDING TO THE RAIL-SERVED INDUSTRIAL LAND BASE

- 24.64 acres
- Located on the south side of the Fraser River
- Multi-modal rail and marine opportunity, leveraging synergies with sister company Seaspan Marine to support regional industrial needs





# THANK YOU

---

QUESTIONS

