

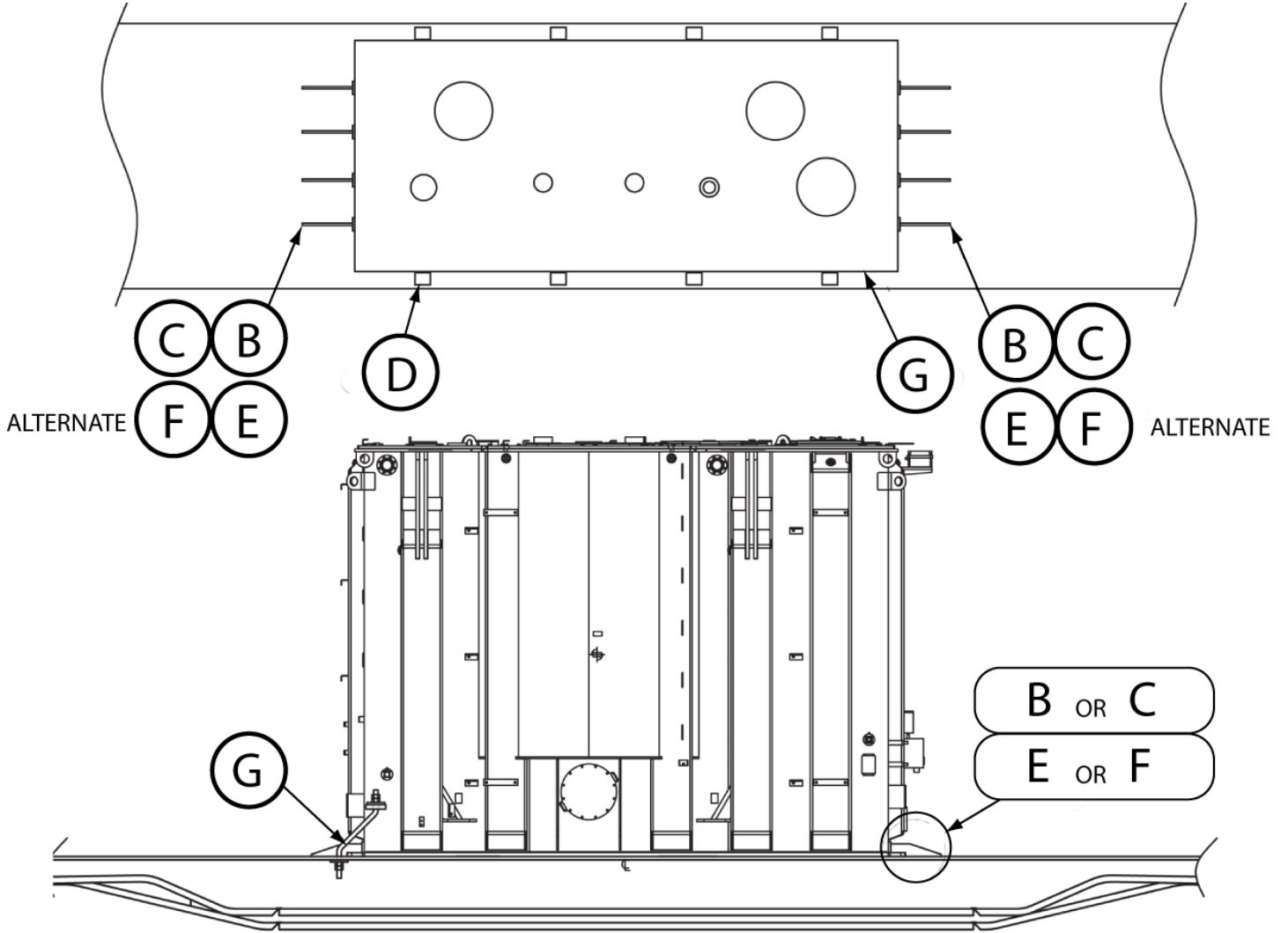


Railway Association  
of Canada

TRANSFORMERS, 100,000 LBS OR GREATER - FLATCARS WITH ½ IN. OR  
THICKER STEEL FLOOR

RAC 13012

Revised 01-2024 Ref AAR Fig 1-D

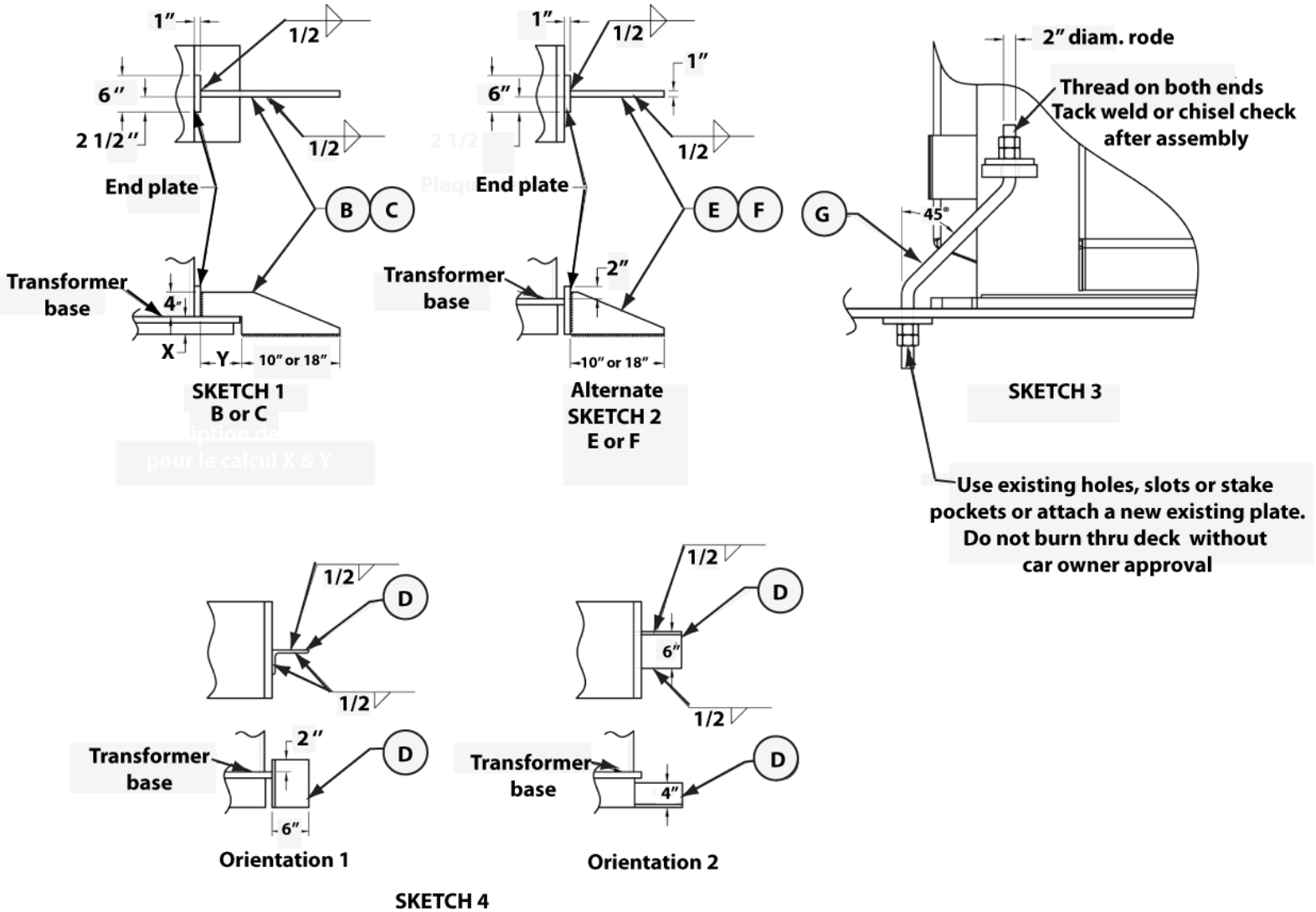




TRANSFORMERS, 100,000 LBS OR GREATER - FLATCARS WITH 1/2 IN. OR  
THICKER STEEL FLOOR

RAC 13012 (Continued)

Revised 01-2024 Ref AAR Fig 1-D



**TRANSFORMERS, 100,000 LBS OR GREATER - FLATCARS WITH ½ IN. OR  
THICKER STEEL FLOOR**

RAC 13012 (Conclusion)  
Revised 01-2024 Ref AAR Fig 1-D

Item	No. of Pcs.	Description
A		Brake wheel clearance: see General Rule 2 in Section 1.
B	See table below	Steel blocking: 1 in. × (4 in. + "X") × (10 in. + "Y") with 1 in. × 5 in. × 6 in. end plate. Locate and weld per Sketch 1. ( <b>minimum X = 0.5 in. ; minimum Y = 1.0 in</b> )
C	See table below	Steel blocking: 1 in. × (4 in. + "X") × (18 in. + "Y") with 1 in. × 5 in. × 6 in. end plate. Locate and weld per Sketch 1. ( <b>minimum X = 0.5 in.; minimum Y = 1.0 in</b> )
D	See table below	Angle: 6 in. × 4 in. × 1/2 in. × 7 in. long. Locate against each side of transformer evenly spaced with 6 in. leg down and secure with 1/2 in. fillet weld. See Sketch 4.
E	See table below (Alternate for Item B only)	Steel blocking: 1 in. × 10 in. with a 1 in. × 7 in. end plate locate vertically against ends of transformer, extending 2 in. above height of transformer base. Locate and weld to car deck per Sketch 2.
F	See table below (Alternate for Item C only)	Steel blocking: 1 in. × 18 in. with a 1 in. × 7 in. end plate locate vertically against ends of transformer, extending 2 in. above height of transformer base. Locate and weld to car deck per Sketch 2.
G	2 per each side of transformer	2 in. rod threaded at both ends with hex nuts on ends. See Sketch 3. Required when using Items E or F.

Transformer Shipping Weight (lb)	No. of Item B (Alt. Item E) each end	No. of Item C (Alt. Item F) each end	No. of Item D each side
250,000 or less	4	N/A	4
250,000 to 350,000 inclusive	5	N/A	4
350,000 to 450,000 inclusive	6	N/A	5
450,000 to 550,000 inclusive	N/A	5	6
550,000 to 650,000 inclusive	N/A	6	6
650,000 to 750,000 inclusive	N/A	7	8
750,000 to 850,000 inclusive	N/A	7	8

**NOTES:**

- Items B or C can be used in place of D if there is room on the car deck.  
For further details, see General Rules