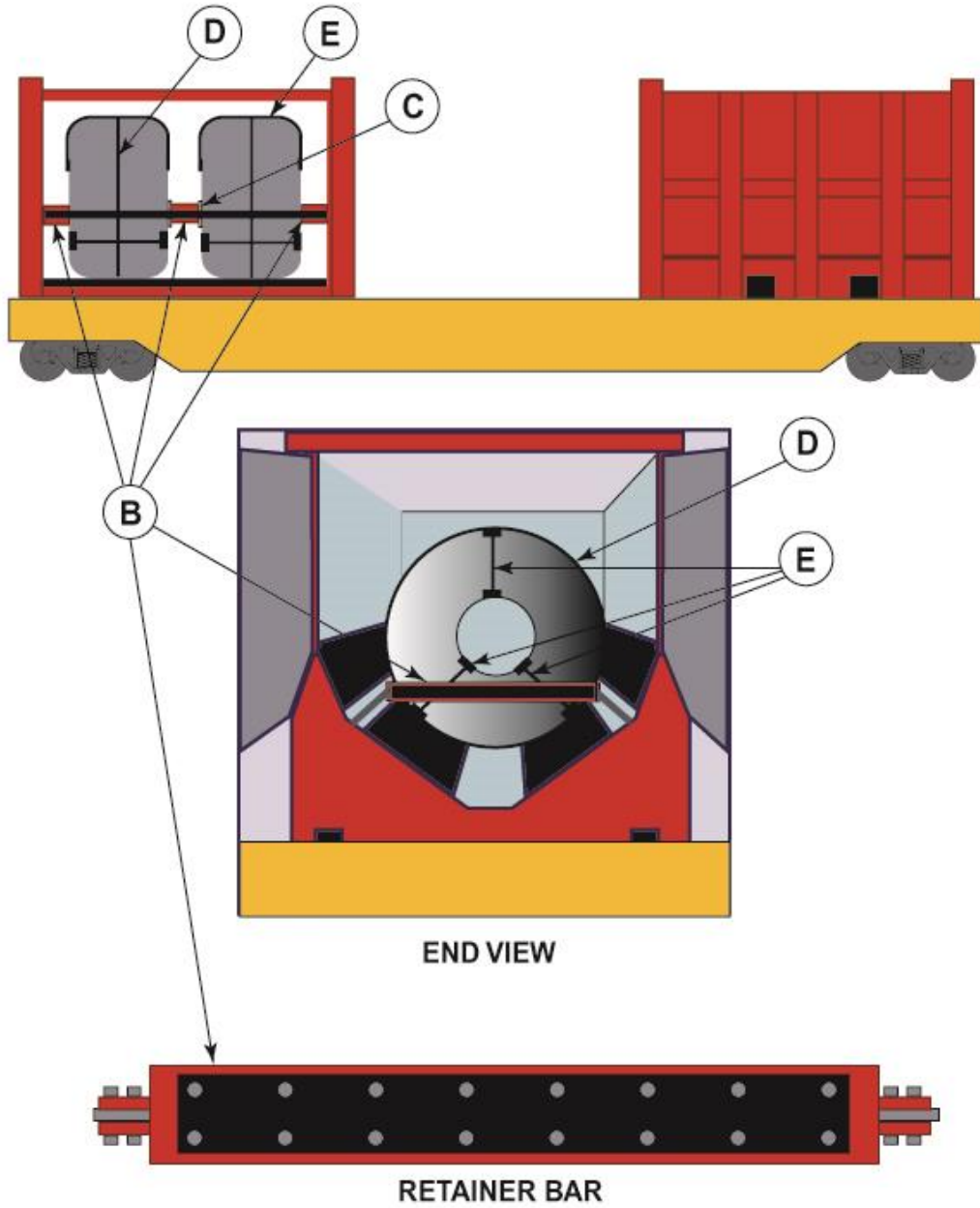


COIL CRADLE CONTAINER LOADED ON FLAT CAR

RAC 17502
New. 08-2010



COIL CRADLE CONTAINER LOADED ON FLAT CAR

RAC 17502 (Concluded)
New. 08-2010

Item	No. of pieces	Description
A		N/A
B	2 per container	Retainer bar: 15 ¾ in. wide 7 in. high length to equal to width of the container and slide into tracks.
C	As Required	Wood blocking: hardwood shim to be applied between coil and retainer when the gap is too wide.
D	1 per coil	Encircling bands ¾ in. x 0.029 in. high tension steel band
E	3 per coil	Eye bands ¾ in. x 0.029 in. high tension steel band. Apply through eye of the coil at 4, 8 and 12 o'clock positions. Suitable edge protection to be applied between band and coils edges.

NOTE: