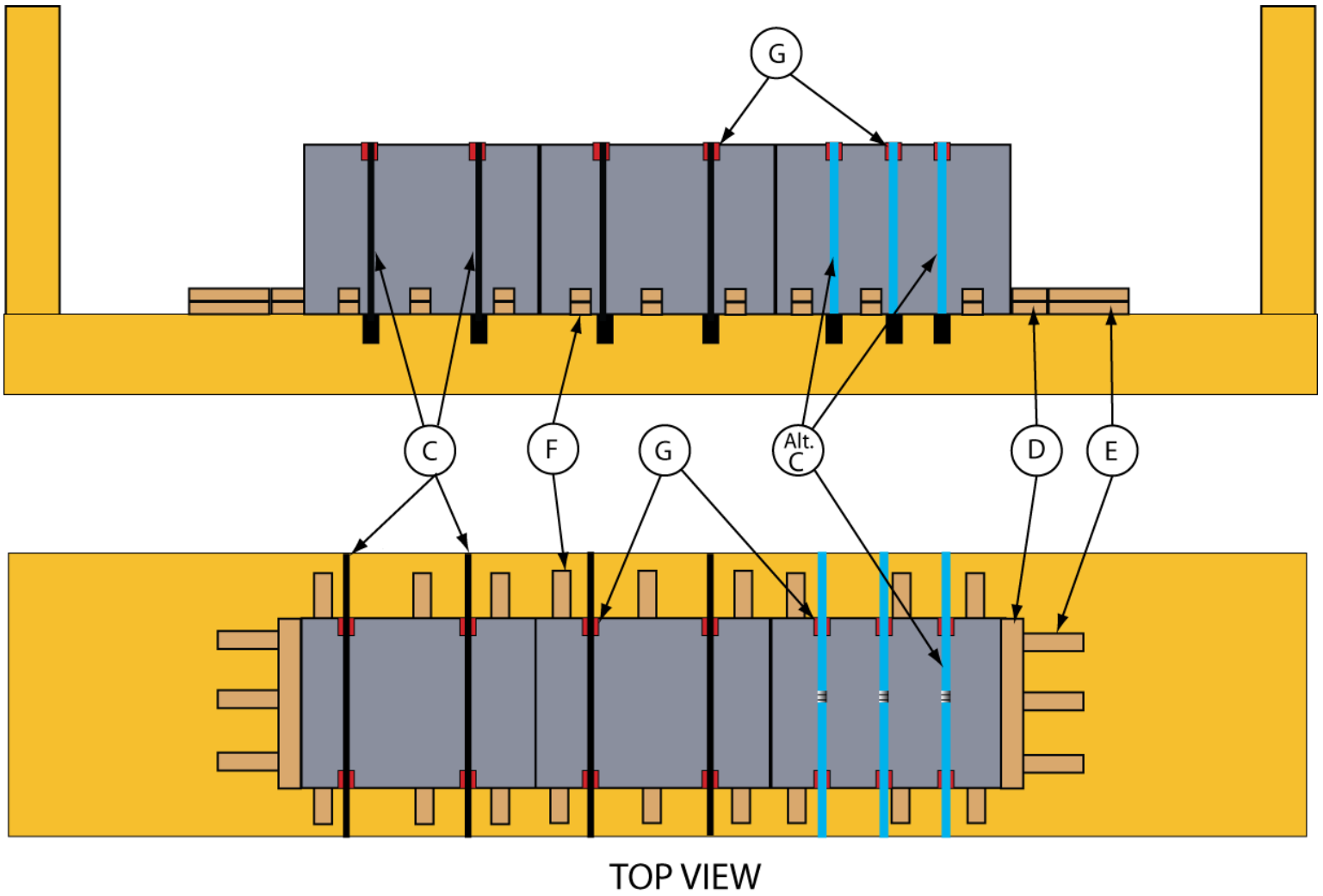


BLOCK, CONCRETE – FLAT RACK CONTAINER WITH END BULKHEADS

RAC 17010

New 04-2019





BLOCK, CONCRETE – FLAT RACK CONTAINER WITH END BULKHEADS

RAC 17010 (Continued)

New 04-2019

Item	No. of Pcs.	Description
A		Vacant
B		Vacant
C	2 per piece 7ft. long or less, add one additional for each additional 3 ft. or less.	Chain tie down: 3/8in., grade 70 with a minimum breaking strength of 26,400 lb. Chains pass over pieces and secure to opposite stake pockets.
D	2 each end of pieces.	Lumber: consist of two pieces of 2 in x 4 in, length equal to width of piece. Secure bottom piece to floor with six 30-D nails, and the top piece to the one below with four 20-D nails.
E	3 against each Item D.	Lumber: consist of two pieces of 2 in X 4 in X 12 in. Secure bottom piece to floor with three 30-D nails, and the top piece to the one below with three 20-D nails.
F	3 set per side 7ft. long or less, add one additional set for each additional 2 ft. or less.	Lumber: consist of two pieces of 2 in X 4 in X 12 in. Secure bottom piece to floor with three 30-D nails, and the top piece to the one below with three 20-D nails.
G	As required	Corner protectors to be applied with all Item C and Alt-C
Alt.C	3 per piece of 7ft. long or less add one for each additional 2 ft. or less.	Tie down straps: AAR approved Type 1A Polyester Grade 7 strapping with ladder buckles.

BLOCK, CONCRETE – FLAT RACK CONTAINER WITH END BULKHEADS

RAC 17010 (Concluded)

New 04-2019

Notes:

1. It is the intention of this Figure that blocks be placed next to each other. If block surface is not to come into contact with other block then a suitable sheet material should be placed between the two faces.
2. If flat rack equipped with drop end bulkhead, bulkhead must be raised
3. Height of load not to exceed height of bulkheads
4. Load must be centrally located on container
5. Stacking not permitted
6. Weight must be evenly distributed so as not to cause an imbalance load.
7. Deck of Flat Racks must be free of debris, snow and ice before loading.
8. Excess chains or straps must be properly trimmed or stowed for transport.
9. Flat Rack must be placed in lower well of car.

For further details see General Rules