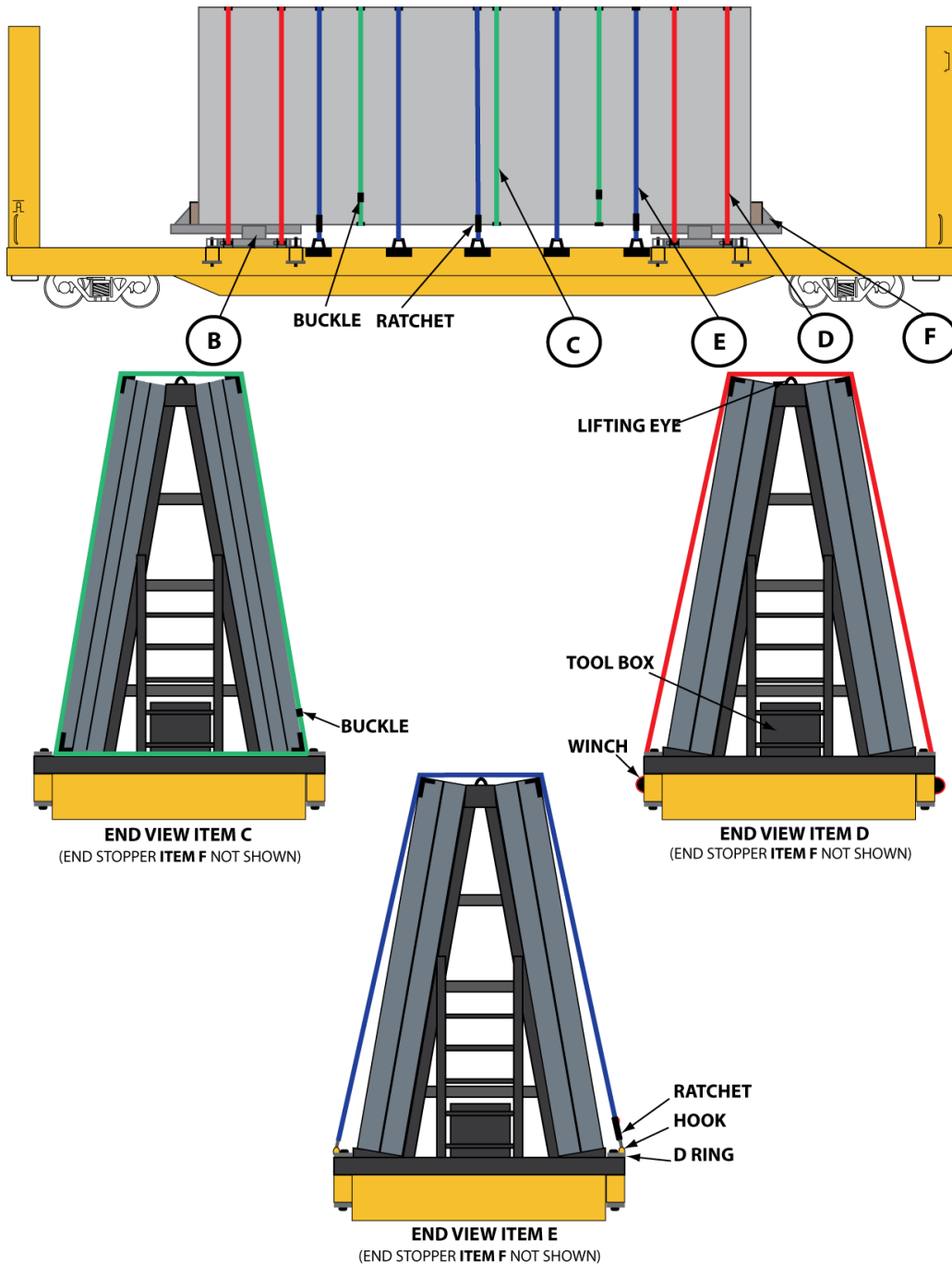




Railway Association
of Canada

Load Under Test Do Not Use Without the Authorisation of RAC
CONCRETE SLABS 30 FT LONG AND OVER BY 12 FT. HIGH, LOADED ON
BULKHEAD FLATCAR EQUIPPED WITH CUSHIONED DRAFT GEARS.

RAC 13016
(New 07-2022)





Railway Association
of Canada

CONCRETE SLABS 30 FT LONG AND OVER BY 12 FT. HIGH, LOADED ON
BULKHEAD FLATCAR EQUIPPED WITH CUSHIONED DRAFT GEARS.

RAC 13016 (Continued)
(New 07-2022)

4 SCREWS

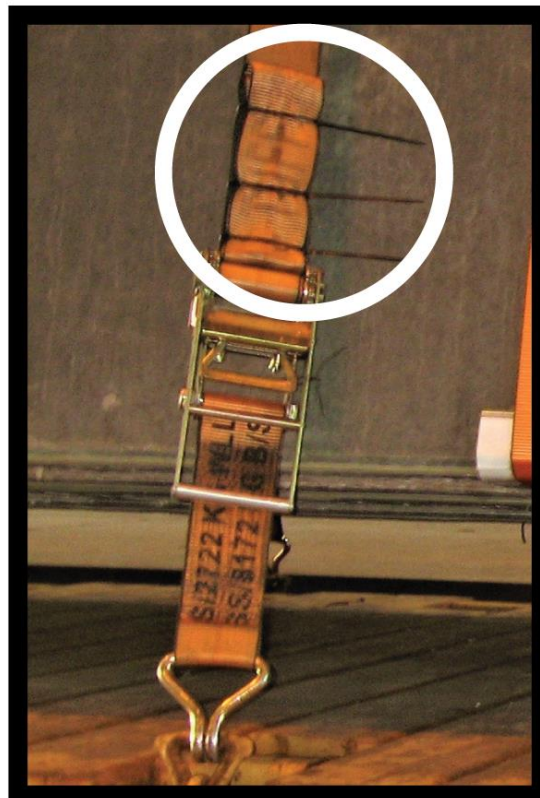


PHOTO 1



PHOTO 2

PHOTO 3





Railway Association of Canada

CONCRETE SLABS 30 FT LONG AND OVER BY 12 FT. HIGH, LOADED ON BULKHEAD FLATCAR EQUIPPED WITH CUSHIONED DRAFT GEARS.

RAC 13016 (Continued)
(New 07-2022)

Item	No. of Pcs.	Description
A		Vacant
B	2 per A-Frame	Bearing pieces: part of A FRAME assembly.
C	3 per load 30 ft. long or less add 1 for each additional 10 ft. or less	Encircling bands: Polyester web strap ratchet assemblies with an MBS of 18,000 encircling and clamping the load to the A-Frame. Edge protectors required at all sharp edges. May be substituted with Type 1A Grade 8 polyester strap with ladder buckle.
D	2 per A-Frame	Securement Bands: consisting of a winch, ratchet, and polyester woven strap 4 in. wide with 20,000 MBS. Winch tensioned using a minimum 30 in. bar. Edge protectors required at all sharp edges.
E	5 per load 30 ft. or less add 1 for each additional 6 ft. or less	Securement Bands: AAR approved Type 1A polyester, Grade 8 strapping with an MBS of 18,000 LBS. Polyester web strap ratchet assemblies equally spaced between are applied over top of entire load and must be tensioned and secured to car floor anchors (D rings) on both side of the car. Edge protectors required at all sharp edges.
F	2 per A-Frame	Additionally built into the A-Frame are adjustable end stops at both ends for each slab, securing load from longitudinal shifting, ensure stops are tight to panel and any void is shimmed. 4 screws to be added through end stops to secure any shims. See PHOTO 1 and PHOTO 2 .

NOTE:

1. **Items (C) & (E)** Buckles and winches must be placed alternately side to side (i.e., first strap buckle/winch placed on right side of load, second strap buckle/winch placed on left side of load).
2. This load as tested is Designed & Tested for 4 concrete panels 30 ft. long by 12 ft. high and 10 in. thick per set of A-Frames. For longer concrete panels increase tie down straps **Item E** and encircling straps **Item C** as per above instructions.



CONCRETE SLABS 30 FT LONG AND OVER BY 12 FT. HIGH, LOADED ON
BULKHEAD FLATCAR EQUIPPED WITH CUSHIONED DRAFT GEARS.

RAC 13016 (Concluded)
(New 07-2022)

3. A-Frames are secured to rail car at stake pockets with four grade 8 x 1 ¼ in. high tensile bolts and heavy plate washers. Bolts are to be double nutted, tack welded, or chisel checked to avoid backing of in transit.
4. Load to be placed on centre at origin, if load is comprised of two separate loads on one car place each load at opposite ends of rail car. Each end will be considered its own load and will be required to be secured as per above.
5. All hooks and portable web ratchet assembly tensioners to be wired.
6. All loose web strapping to be secured as per **PHOTO 3**.