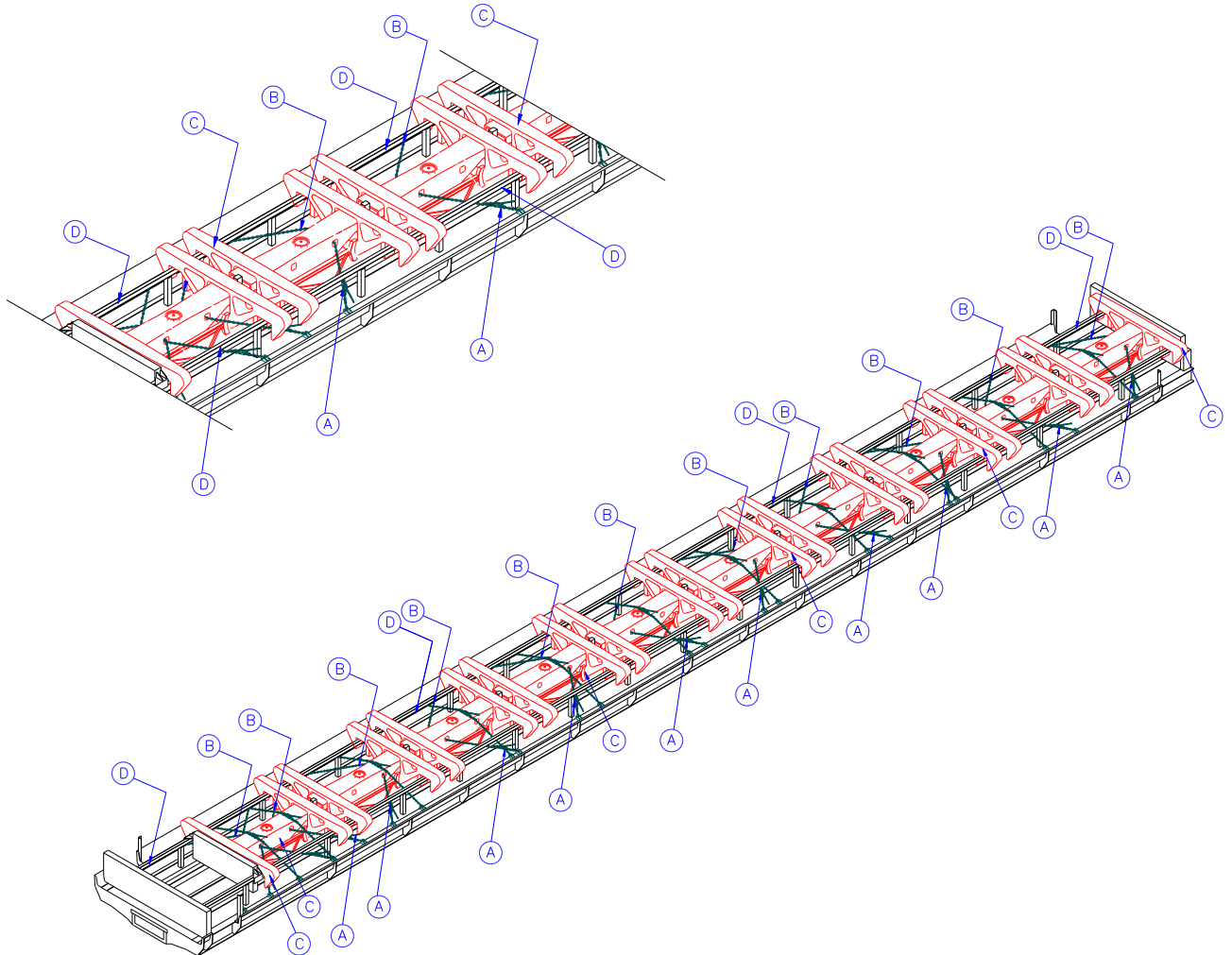


FREIGHT CAR TRUCK ASSEMBLIES (LESS WHEELS AND ADAPTERS)
SPECIALLY EQUIPPED FLAT CARS WITH PERMANENT END BULKHEADS

RAC 13005

New 3-1997 (Ref: AAR)



FREIGHT CAR TRUCK ASSEMBLIES (LESS WHEELS AND ADAPTERS)
SPECIALLY EQUIPPED FLAT CARS WITH PERMANENT END BULKHEADS

RAC 13005 (concluded)

New 3-1997 (Ref: AAR)

Item	No. of Pcs.	Description
A	11 per car.	Load Binder Tensioner Device: Minimum breaking strength not to be less than 28,400 lb.
B	11 per car.	Chains: 3/8 in. diameter, grade 80 : Minimum breaking strength not to be less than 28,400 lb.
C	10 per car.	Truck Assemblies: Not to include adapters and wheel sets.
D	2 per car.	Longitudinal Side Rails

Notes:

1. Loading of trucks assemblies to begin at “A” end of car with the pedestal area of side frames on longitudinal side rails.
2. Truck assembly bolsters to be butted with as little or no space between.
3. Chains are to be placed through opposing bolster brake rod openings as shown with the chain on the first truck assembly through brake rod opening closest to bulkhead.
4. Each assembly will have one chain applied with the exception of the number ten (10) truck which has two (2) chains.
5. Chains on the number ten (10) truck shall be opposing as shown.

See General Rules for further details.