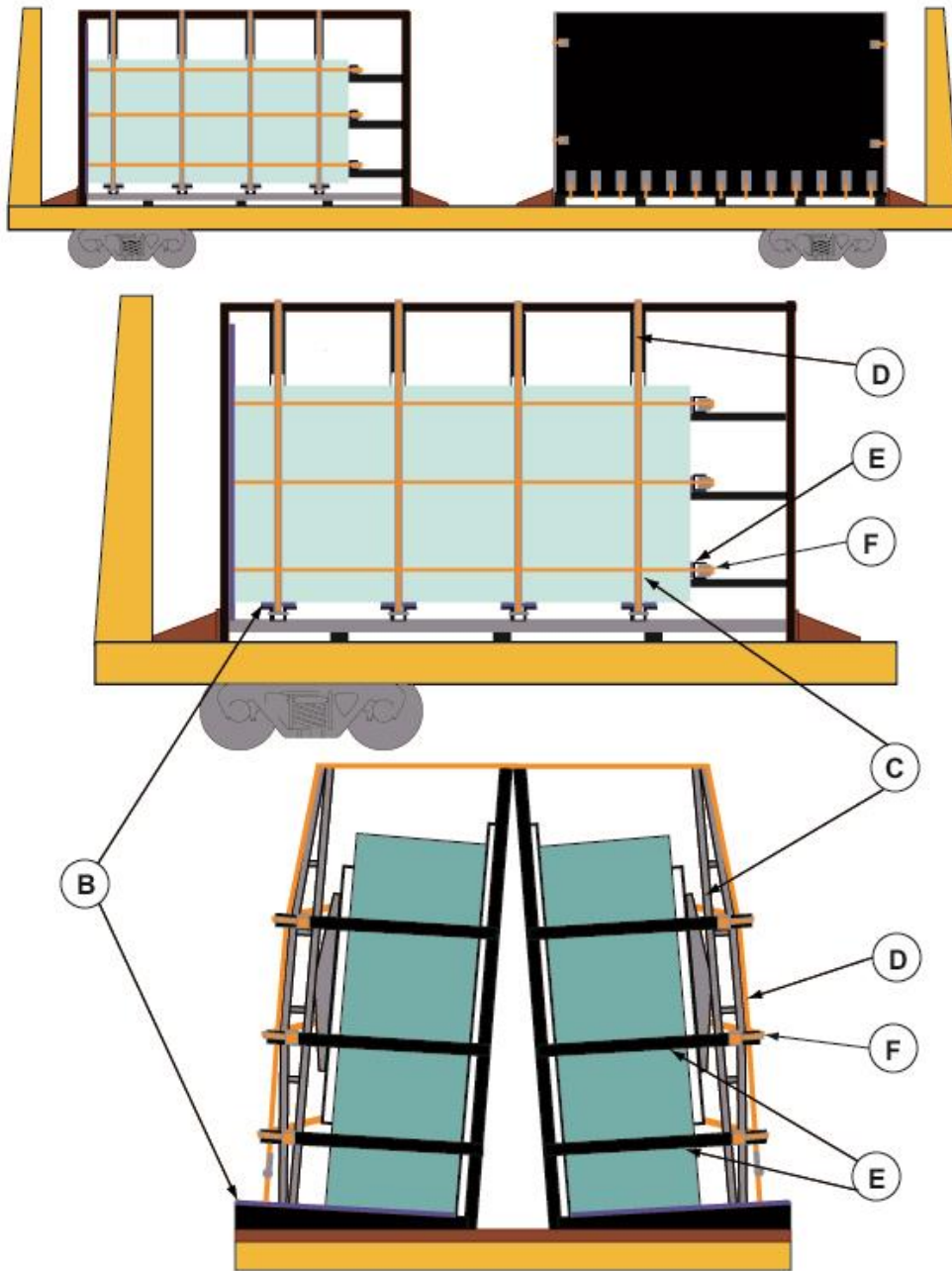


GLASS PANELS,
LOADED ON SPECIALLY EQUIPPED FLAT CARS
WITH PERMANENT END BULKHEADS.

RAC 13001
New 04-2006





GLASS PANELS,
LOADED ON SPECIALLY EQUIPPED FLAT CARS
WITH PERMANENT END BULKHEADS.

RAC 13001 (Concluded)
New 04-2006

Item	No. of Pcs.	Description
A		Vacant
B	4 per package	Bearing Pieces: permanent floor bearing pieces wedged at 90 degrees to the A-frame
C	4 per package	.
D	4 per package	Tie-Down Bands:
E	3 per package	
F	3 per package	Tie-Down Bands:

NOTA: