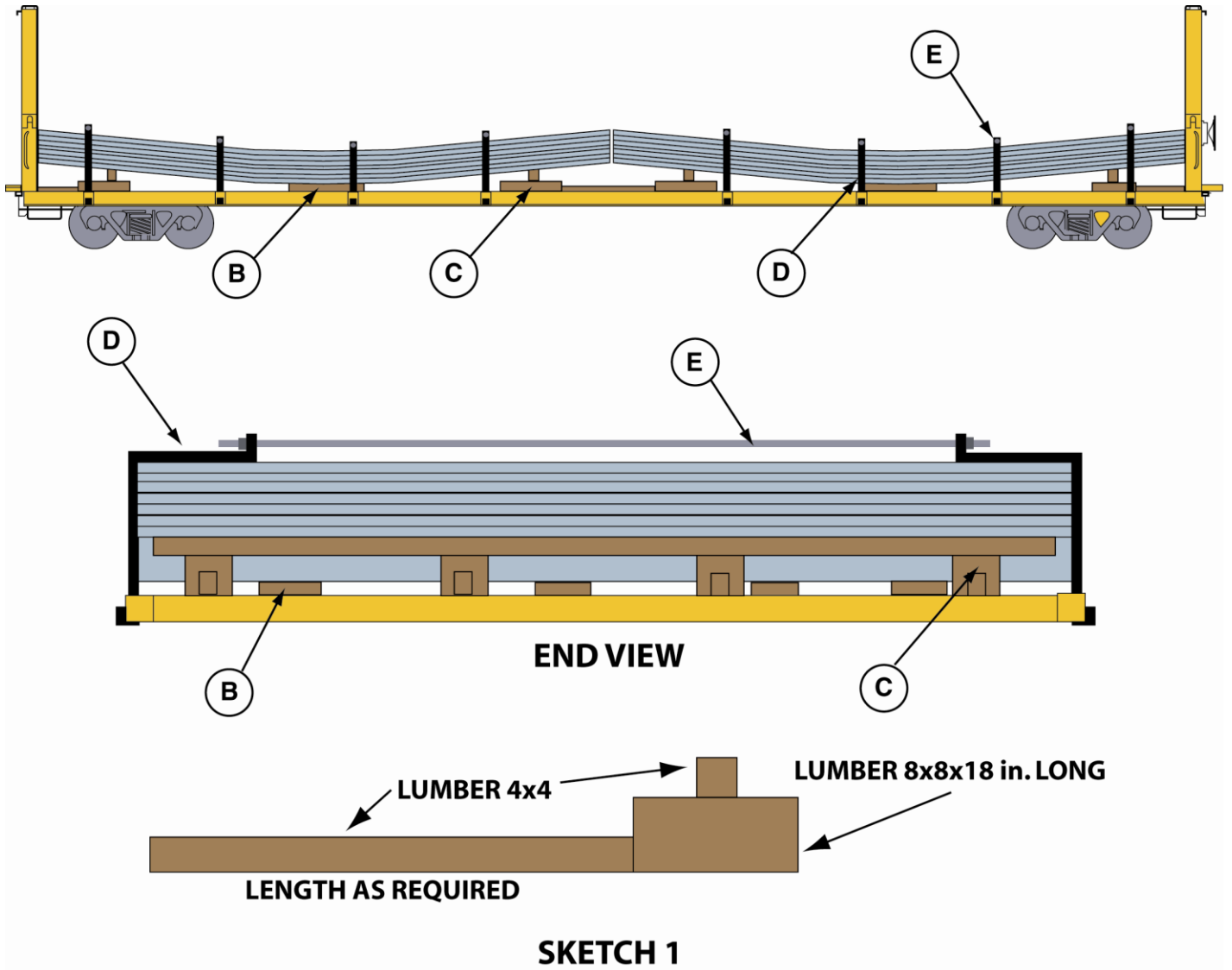




PLATES, ARCHED STEEL CARS EQUIPPED WITH PERMANENT END
BULKHEADS

RAC 12314

New 11-2006



**PLATES, ARCHED STEEL CARS EQUIPPED WITH PERMANENT END
BULKHEADS**

RAC 12314 (Concluded)
New 11-2006

Item	No. of Pcs.	Description
A		Vacant.
B	4	Lengthwise Bearing Pieces: Lumber, 2 in. x 3 in. x 7 ft. long. in one piece and preferably rough. Locate pieces longitudinally under center of piles.
C	1 at each end against bulkheads and 1 in center of car	Blocking: Lumber, 8 in. x 8 in. and lumber 4in. x 4in. Locate longitudinally against each bulkhead and in center of load. Secure to car floor with 20D or 4 in. nails. (See SKETCH 1)
D	4 per pile	Clamping pieces: steel tie-bars 3 ½ in. wide x ½ in. thick, length to suit. Form and secure to stake pocket by bending the exceeding length upward. (See END VIEW)
E	1 per Item “D”	Rods: 1 in. diameter, threaded, length to suit. Locate across top of load and secure through holes in Items “D” with locknuts.

Notes:

1. Inspect stake pockets for cracks in welds and or deformity prior to attaching securement.

For further details see General Rules.