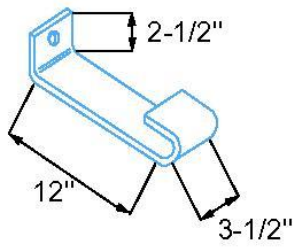
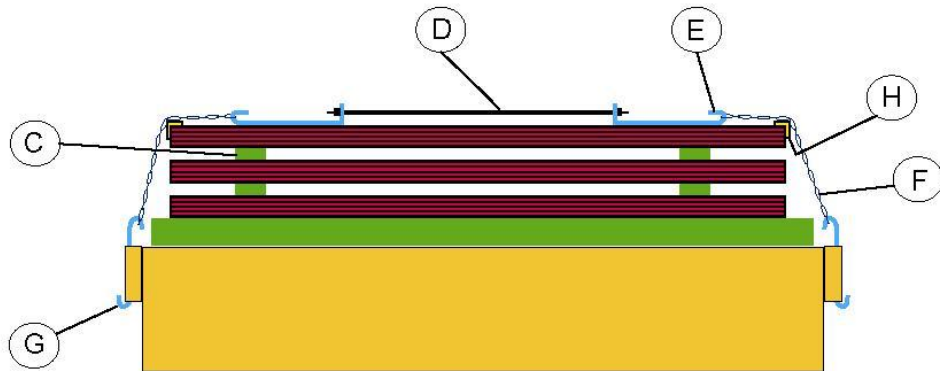
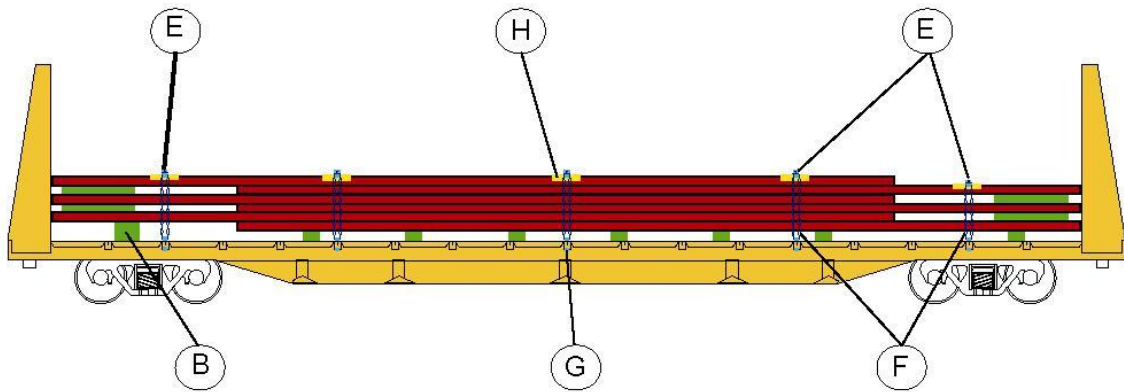
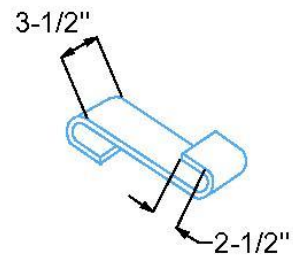


PLATES, WIDE, OVER 93 IN. WIDE 35FT. AND OVER IN LENGTH, OF  
UNIFORM WIDTH AND THICKNESS FLAT CARS EQUIPPED WITH  
PERMANENT END BULKHEADS AND 52 FT. 6 IN. VOID SPACE BETWEEN  
BULKHEADS

RAC 12313  
New 6-1998



DETAIL "A"



DETAIL "B"

**PLATES, WIDE, OVER 93 IN. WIDE 35FT. AND OVER IN LENGTH, OF UNIFORM  
WIDTH AND THICKNESS FLAT CARS EQUIPPED WITH PERMANENT END  
BULKHEADS AND 52 FT. 6 IN. VOID SPACE BETWEEN BULKHEADS**

RAC 12313 (concluded)  
New 6-1998

<b>Item</b>	<b>No. of Pcs.</b>	<b>Description</b>
A		Vacant.
B	8	Bearing Pieces: Hardwood, 6 in. x 6 in. length to be equal to width of car floor, in one piece and preferably rough. Locate end pieces approximately 4 ft. in from ends of pile, with others equally spaced between. Height of bearing pieces located under overhanging portion of second lift must be increased to keep load level.
C	2 rows per each void.	Separators: Hardwood, 2 in. x 3 in. Locate longitudinally over side sills between overhanging lifts. Maximum void between separators and bulkhead, separators and end of lift must not exceed 3 ft.
D	5	Rods: ¾ in. diameter, threaded, with nuts. Locate across top of load and secure through holes in Items “E”.
E	10	J-Hooks: ½ in. x 3-1/2 in. flat steel bar, minimum 12 in. in length. Open end to be drilled to accept Item “D” rod, the other end formed to accept Item “F” chain. See Detail A”.
F	10	Chain: 3/8 in. diameter, grade 70, formed in a 54 in. closed loop. Locate around ends of Items “E” and “G”.
G	10	S-Hooks: ½ in. x 3-1/2 in. flat steel bar, (must be made in one piece) length not to extend more than 3 in. above car deck. Locate through inside of stake pocket and secure with Item “F” chain. See detail “B”.
H	20	Corner Protectors: ½ in. x 2 in. x 2 in. steel angle, minimum 18 in. in length. Locate at top of pile under each Item “F”. Secure entire assembly by tightening Item “D” rods.

**Notes:**

1. Lifts must be staggered alternately against opposite bulkheads.
2. A minimum of three (3) securement assemblies must contact all lifts.
3. A lift, as defined in this figure, is a stack of uniform plates.
4. Inspect stake pockets for cracks in welds and or deformity prior to attaching securement.

See General Rules for further details.