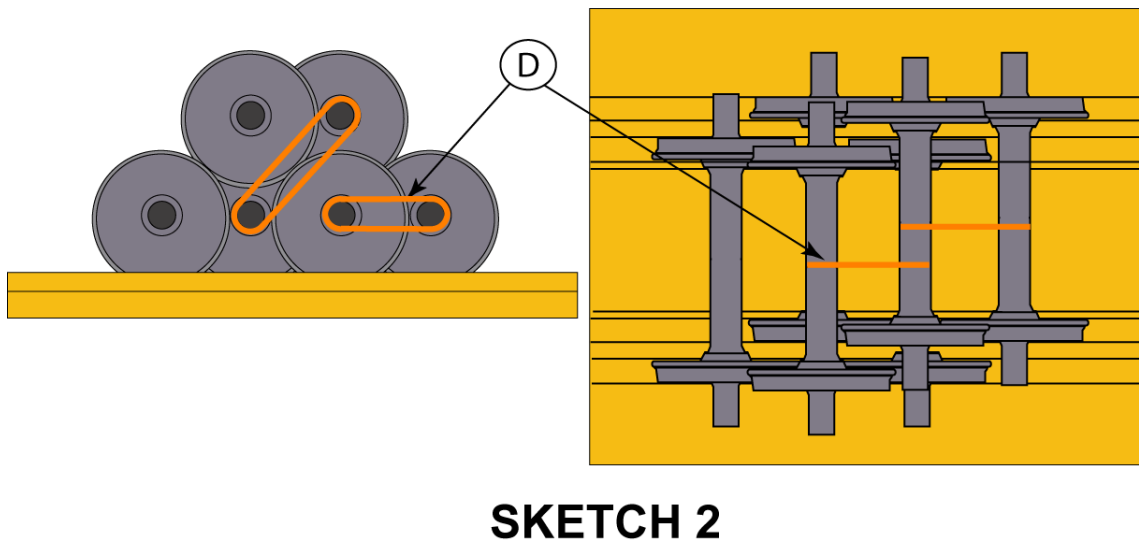
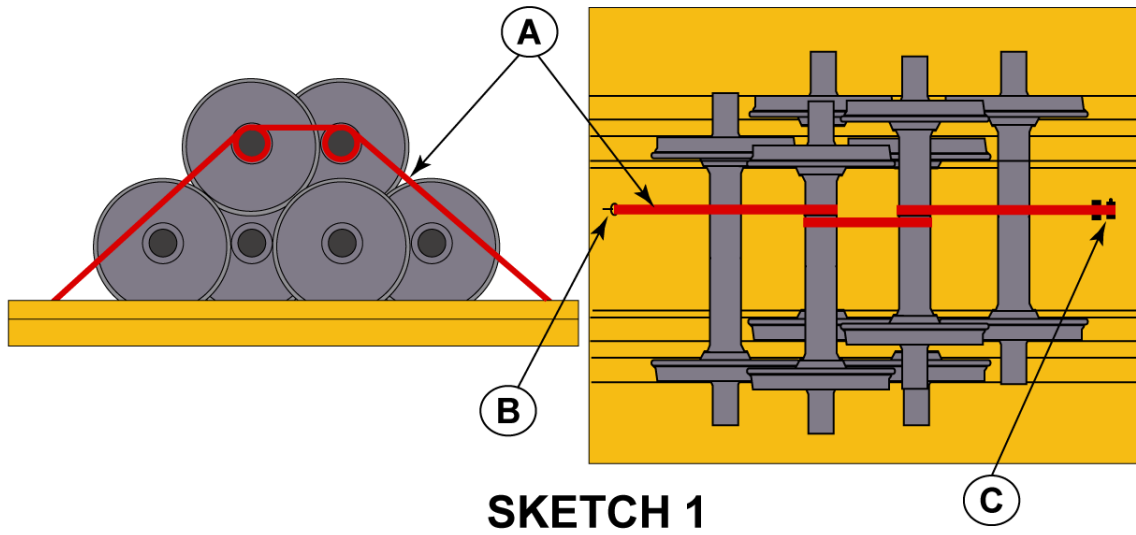
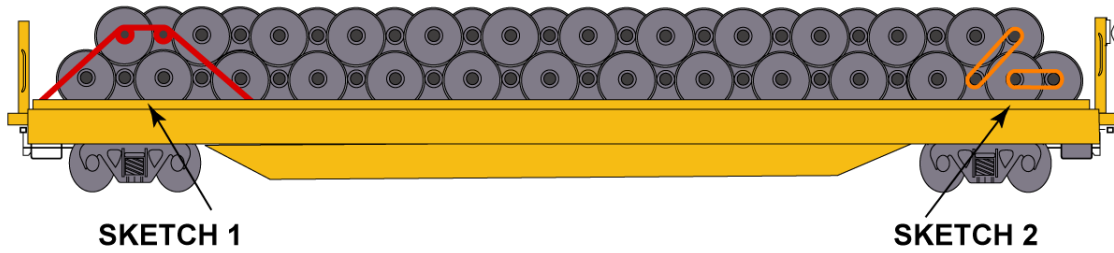


WHEELS, MOUNTED RAILWAYS, TWO ROWS HIGH,
SPECIALLY EQUIPPED FLAT CAR

RAC 12085
New 05-2010



WHEELS, MOUNTED RAILWAYS, TWO ROWS HIGH,
SPECIALLY EQUIPPED FLAT CAR

RAC 12085 (Concluded)
New 05-2010

Item	No. of Pcs.	Description
A	2	4 in polyester strap with a minimum breaking strength (MBS) of 20,000 lbs with D ring as shown in SKETCH 1 . Can be substitute with Polyester Type 1 A Grade 8.
B	2	U-bolt welded to car.
C	2	Standard strap winch welded to car.
D	4	Applied Polyester Type 1 A Grade 8 to axle as shown in SKETCH 2 , buckles not to contact axle.

Notes and Additional Requirements

1. Wheel sets sit in support racks which prevent motion.
2. Per AAR Manual of Standards and Recommended Practice, Section G-II, "Wheel and Axle Manual," RP-632, all mounted wheel sets must be shipped using methods that prevent axle bodies and roller bearings from having metal-to-metal contact with load securement devices, other wheel sets, or any other metal objects.
3. Load must be positioned to avoid end-to-end imbalance.
4. Car is not to be humped when loaded to this figure.

See General Rules of the AAR Open Top Loading Rules for further details.