

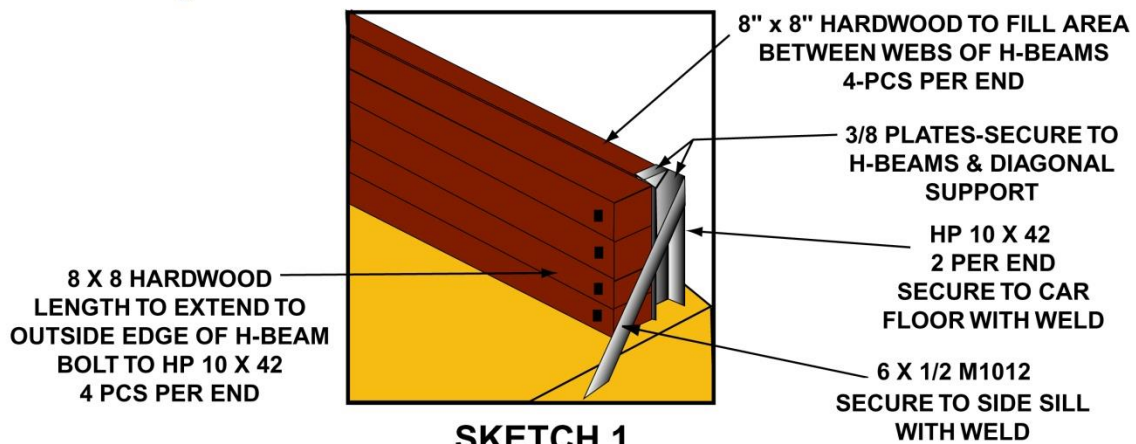
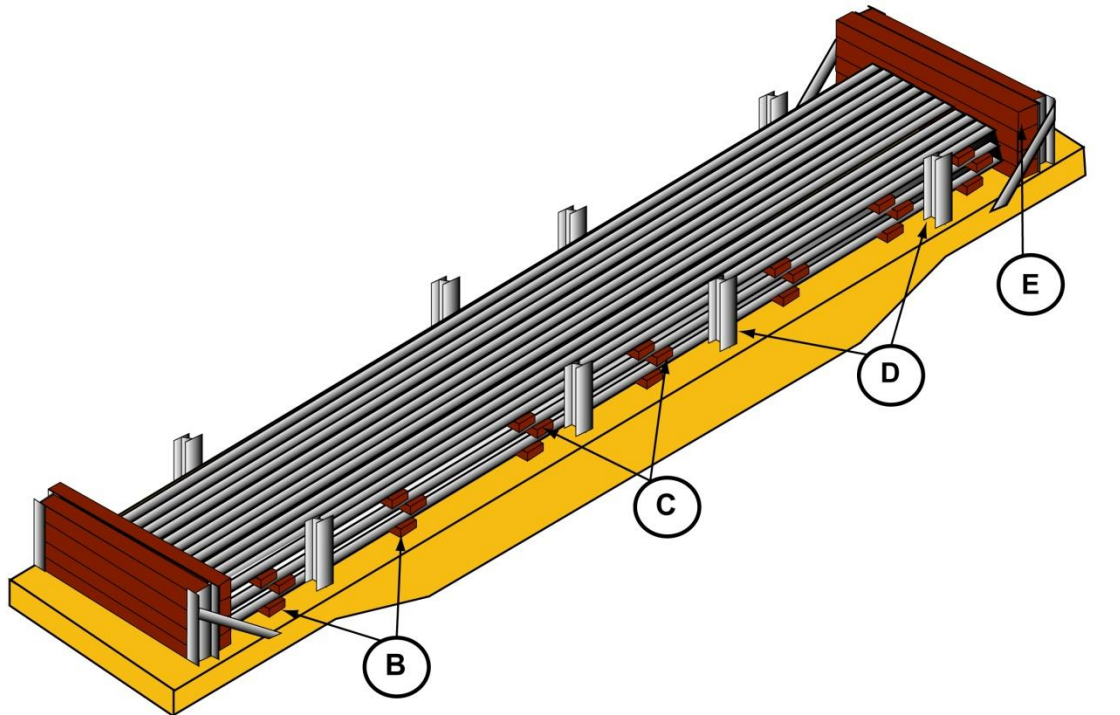


Railway Association
of Canada

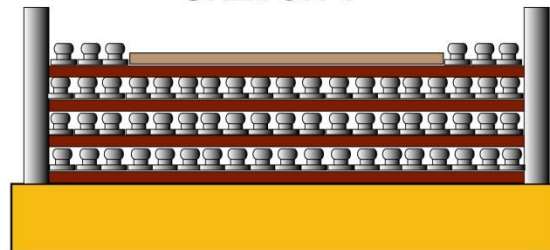
RAILS, 78 FT TO 80 FT LONG—BULKHEAD FLATCARS, 85 FT AND OVER,
WITH FIXED STEEL SIDE STAKES

RAC 12009-F

New 02-2012



SKETCH 1



SKETCH 2

**RAILS, 78 FT TO 80 FT LONG—BULKHEAD FLATCARS, 85 FT AND OVER,
WITH FIXED STEEL SIDE STAKES**

RAC 12009-F (Concluded)
New 02-2012

Item	No. of Pcs.	Description
A		Vacant
B	7	Bearing pieces: hardwood, 1 in. × 3 in., length equal to width of car floor. Locate end pieces a minimum of 2 ft in from each end of load, with others equally spaced between.
C	7 each tier	Separators: 1 in. × 3 in., hardwood, length equal to width of load but must not extend beyond car side. Locate in line with Items B.
ALT. B&C	7each	Hardwood bearing pieces and separators may be substituted by West coast type 4 x 4 Douglas Fir.
D	8	Steel side stakes: 10- in. H beams, height, 36 in. above car floor. Locate end stakes approximately 12 ft from ends of car. Locate intermediate stakes approximately 3 ft 6 in. from center of car.
E	1 per each end of car.	Bulkheads: construct as described in Sketch 1

Notes and Additional Requirements:

1. Maximum total amount of longitudinal void must not exceed 4 ft 8 in.
2. Shorter pieces minimum 60 feet long may be loaded in the middle of the load but cannot be in the bottom row or as an outside piece that can contact Item D, the side stakes. The number of short pieces cannot exceed 15% of the total number of pieces in the load.
3. Maximum lateral void must not exceed the base width of one rail in any layer
4. Top layer may be reduced providing void is filled as shown in sketch 2. One spreader block is required for each separator to maintain the requirement of note 3, spreader block should be equal to width of separator and no less than 2 inches in height and secure as per rule 11.9 of the AAR Open Top Loading General Rules Section 1. To maintain balanced load, the number of rail on either side of block must be equal +/- one piece.
5. Height of load must not exceed height of bulkheads or side stakes.

Reference the General Rules in Section No. 1 of the *Open Top Loading Rules Manual* for additional details.