



CANADA'S RAILWAYS

Railway Emergency Response Plan Template, ICS and TDG Regulations



Table of Contents

- Background
- Plan Template
- Incident Command System
- Memorandum of Understanding – Emergency Response Resources
- Next Steps
- TDG Regulations – now and future



Background

- Lac Megantic Train Derailment
- Emergency Response Taskforce
- Recommendation 30
- Transport Canada Study - Short line railway preparedness and input letter from TC

Lac Megantic Derailment

- July 6, 2013
- Resultant investigations, orders, rules, directions



@RailCanada

www.facebook.com/RailCanada

www.linkedin.com/company/railway-association-of-canada

www.railcan.ca

Emergency Response Task Force

- 2014-2016
- 70+ meetings
- 40 Recommendations



@RailCanada

www.facebook.com/RailCanada

www.linkedin.com/company/railway-association-of-canada

www.railcan.ca



ERTF Recommendation 30

- **Recommendation 30:** Require rail carriers to share emergency response and preparedness information pertaining to potential dangerous goods incidents with emergency planners, first responders, CANUTEC and other agencies, to increase cooperation and coordination at dangerous goods incidents.

TC Study and Letter to RAC

- October 2017 – TC and RAC meeting regarding ERPs.
- An agreement was reached, with expectations and timelines.



ER Plan Template

- #1 Purpose and Scope with Glossary of Terms
- #2 Plan Implementation Process
- #3 Incident Management (Roles and Responsibilities)
- #4 Potential Incident Analysis (PIA)
- #5 Initial Assessment
- #6 Response Actions
- #7 Internal and External Resources
- #8 Plan Administration



ER Plan Template

- Tables
- Appendices





Incident Command System

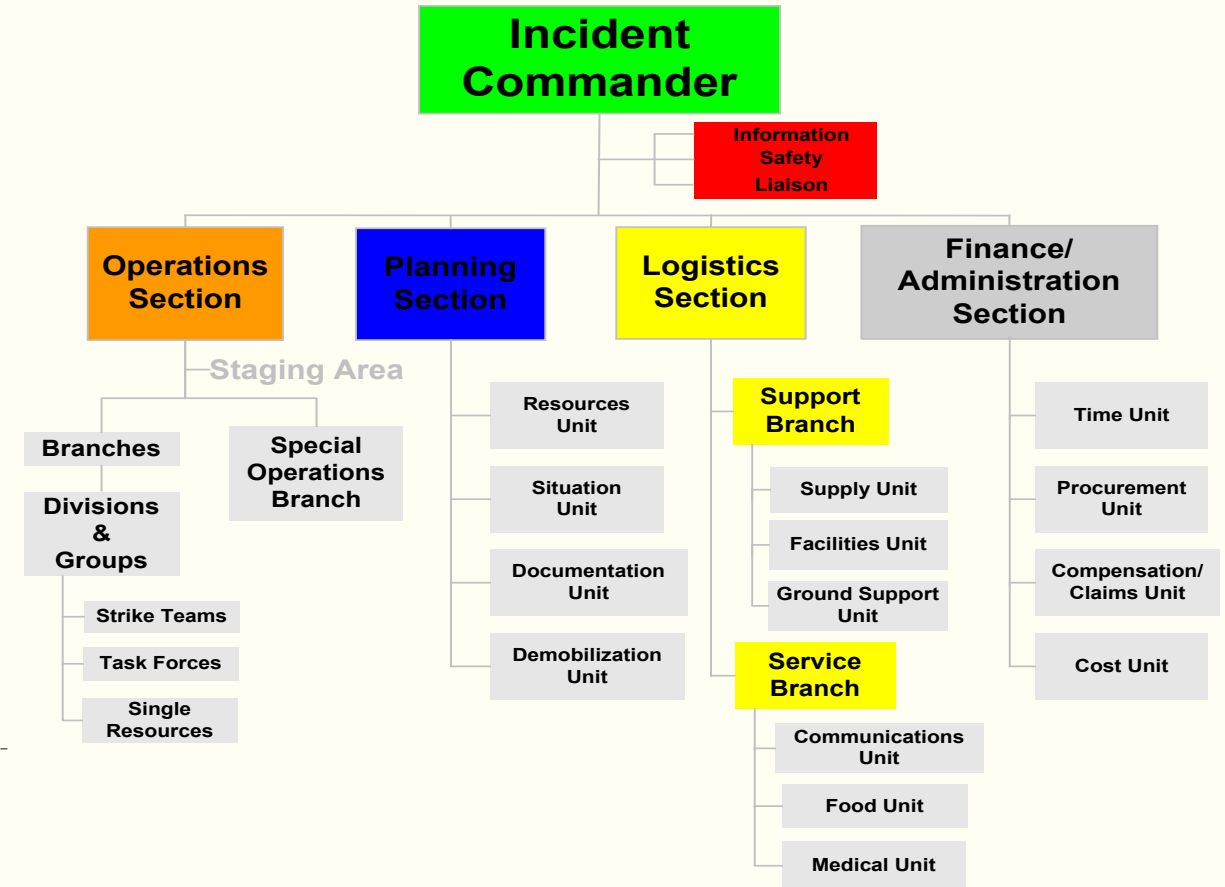
The Incident Command System is a standardized on site management system designed to:

- Enable safe, effective, efficient incident management by integrating a combination of
- facilities, equipment, personnel, procedures, and communications
- operating within a common organizational structure.

Incident Command System

ICS has three primary purposes:

- to provide for the orderly and predictable division of labour
- to provide for the overall **safety** at the incident or event
- to ensure that the work at the incident or event is performed efficiently and effectively





Incident Command Characteristics

- Recognized jurisdictional authority
- Applicable to all risk and hazard situations
- Applicable to day-to-day operations
- Unity of command
- Span of control
- Modular organization
- Common terms
- Integrated communications
- Consolidated incident action plans
- Designated incident facilities
- Resource management

Incident Command: Training

- ICS 100 (available online)
- ICS 300 (future development)
- Plan testing
- Exercises



MOU on Emergency Response

- Agreement between RAC, CP, CN
(September 2018)
- Mutual aid for major incidents
- Equipment, resources and personnel



Railway Association of Canada
Association des chemins de fer du Canada

MEMORANDUM OF UNDERSTANDING Shortline Railway Emergency Response September 2018

Between

THE RAILWAY ASSOCIATION OF CANADA (Hereinafter referred to as
"RAC")

And

CANADIAN NATIONAL RAILWAY COMPANY (Hereinafter referred to as
"CN")

And

CANADIAN PACIFIC RAILWAY LIMITED (Hereinafter referred to as "CP")

@RailCanada

www.facebook.com/RailCanada

www.linkedin.com/company/railway-association-of-canada

www.railcan.ca



Railway Association
of Canada



Next Steps

- Complete the Template
- Communicate to Employees
- Share with Stakeholders (Municipalities, TC, Shippers)
- Complete ICS-100 level

TDG Update

- Part 7 (Emergency Response Assistance Plan) Proposed in CGI
- Part 8 (Reporting Requirements)



Part 7 (Emergency Response Assistance Plan)

Updates on Regulations Amending the TDG Regulations – Nov. 2018

- Additional requirements to the shipping document;
- Requirement to provide technical or emergency response advice within 10 minutes of a request;
- Tiered response levels;
- 6-month transition period;
- New ERAP website part of Canada.ca
- ERAP Guides
- Next Steps

Part 8 – Reporting Requirements

- The Release or Anticipated release of dangerous goods that are being offered for transport, handled or transported.
- **Release** = any unplanned or accidental discharge, emission, explosion, outgassing or other escape of dangerous goods
- **Anticipated release** = DGs must be transferred to another container to prevent an accidental release.



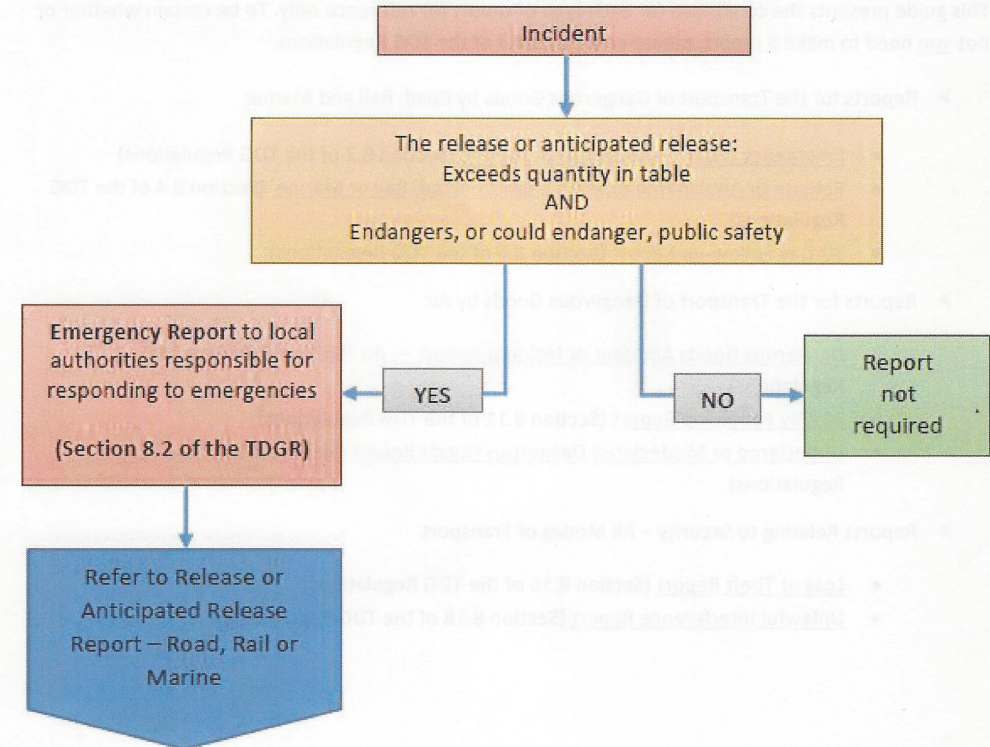
Types of reports required by TC

- Emergency Report (Section 8.2 of the TDG Regs.)
- Release or Anticipated Release Report (Section 8.4 of the TDG Regs.)
- 30-Day Follow-up Report (Section 8.6 of the TDG Regs.)

Flow Chart

MUST I MAKE AN EMERGENCY REPORT BY TELEPHONE (ROAD, RAIL OR MARINE)?

The flowchart below should help [you](#) answer this question (Section 8.2 of the TDG Regulations). [Annex F](#) contains a list of local authorities responsible for responding to emergencies. For a list of information to provide, please refer to [Annex A](#) (Section 8.3 of the TDG Regulations).



TC Guide on reporting available at : <http://www.tc.gc.ca/eng/tdg/publications-guide-1300.html>

@RailCanada

www.facebook.com/RailCanada

www.linkedin.com/company/railway-association-of-canada

www.railcan.ca



Emergency Report -Table

Class	Packing Group or Category	Quantity
1	II	Any quantity
2	Not applicable	Any quantity
3, 4, 5, 6.1 or 8	I or II	Any quantity
3, 4, 5, 6.1 or 8	III	30 L or 30 kg
6.2	A or B	Any quantity
7	Not applicable	A level of ionizing radiation greater than the level established in section 39 of the "Packaging and Transport of Nuclear Substances Regulations, 2015"
9	II or III, or without packing group	30 L or 30 kg

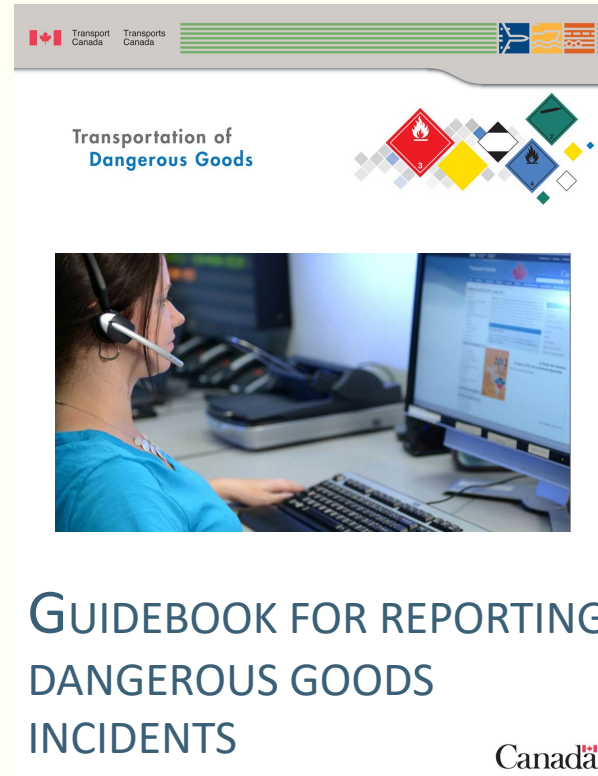
@RailCanada

www.facebook.com/RailCanada

www.linkedin.com/company/railway-association-of-canada

www.railcan.ca

TC Guidebook for incident reporting



@RailCanada

www.facebook.com/RailCanada

www.linkedin.com/company/railway-association-of-canada

www.railcan.ca

Questions and Moving Forward

- Fill out Template with Railway specifics.
- Note: not all sections of the plan have to be used, the Railway may choose to use certain parts only
- Complete ICS 100 Level (online, free, 1-2 hours max)
- Communicate plan to employees, municipal responders etc.
- Develop an exercise plan (annual, bi-annual...)
- Look at expanding your Plan to other areas of potential incident – such as non-DG, fires, accidents.



Railway Association
of Canada

@RailCanada

www.facebook.com/RailCanada

www.linkedin.com/company/railway-association-of-canada

www.railcan.ca/fr